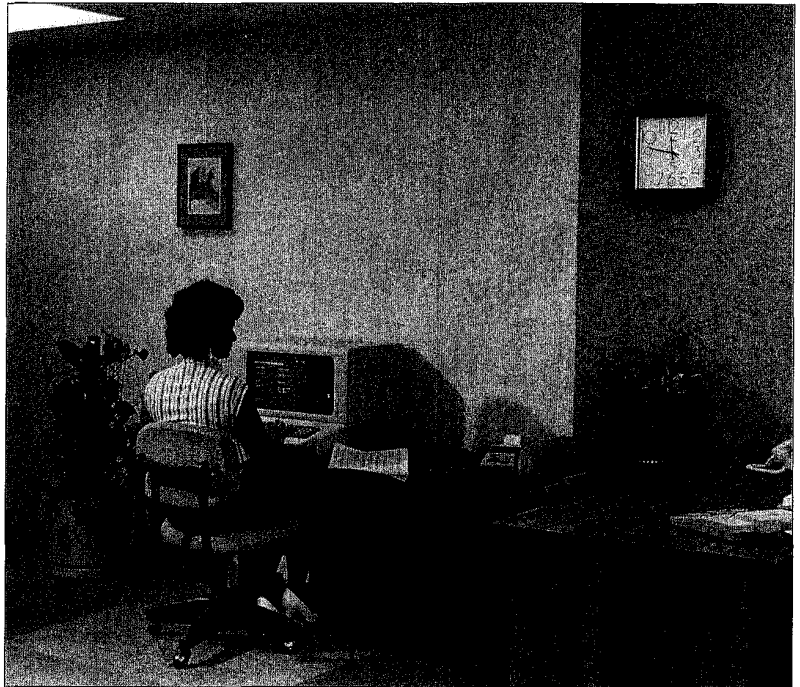


HARDY

338

DEMOUNTABLE PARTITION



DESCRIPTION

The Hardy 338 Demountable Partition combines the best features of modern building materials; i.e., steel for strength, $\frac{3}{4}$ " kerfed gypsum panels for low cost fire resistance, clear anodized or bronze finished aluminum and vinyl finishes for handsome durability.

The 338 system can be installed in full-height, cornice height or lowrail height in wide choices of vinyl covered or paint grade face panels 24 inches in width.

A wide assortment of accessories and trim are available as well as various opening for doors, pass throughs and glazing. Stud cavities permit routing of utilities, both vertically and horizontally.

COST CONSIDERATIONS

In many kinds of building, the possibility of future relocation should be a factor in deciding between fixed or demountable partitions. The initial cost of demountable partitions may be slightly higher than for a permanent partition with comparable properties, but building management experience indicates that changes in partition location affect a substantial portion of partition footage each year. With the first move, a demountable partition will more than offset the original cost difference.

In addition, the Hardy 338 System offers greater savings when investment tax credit and accelerated method of depreciation are employed. Under this method of accounting the IRS allows a 10% tax credit the first year and a 5 year accelerated depreciation program for the cost of the 338 system.

Check with your tax advisors as to current status of the IRS laws governing tax credits and accelerated depreciation.

PANELS

The kerfed gypsum face panels are 24 inches wide and are available as vinyl-covered panels in a wide array of colors

and textures to provide a prefinished wall surface.

Economical paint grade panels are also available for the Hardy 338 system. These panels may be painted after erection but prior to installing the finish trim and door frames.

TRIM COMPONENTS

All aluminum trim components are available with a clear anodized or bronzed finish. P.V.C. extrusions are available in bronze and black. Other colors are also available on special order.

GLAZING

Design flexibility is the keynote in Custom Borrowed Lights or Pass Throughs which can be built to any size within the glazing limitations.

Glazing Limitations:

Thickness	Maximum Total Glass Area
$\frac{1}{8}$ "	not recommended
$\frac{3}{16}$ "	30 sq. ft.
$\frac{7}{32}$ "	30 sq. ft.
$\frac{1}{4}$ "	30 sq. ft.

Note: These limitations are based upon the use of structural glazing members surrounding the glass.

Figures are given for general reference. Consult a glass manufacturer for limitations of special glasses.

DOOR FRAMES

Clear anodized and bronze finished aluminum door frames are available for the Hardy 338 system. More economical but less esthetic painted steel frames are available in several colors. Both of these are 3 piece knock-down frames which are installed after the face panels are erected but prior to applying the base and other trim. Special height and width frames are available on special order.

ARCHITECTURAL SPECIFICATIONS / HARDY 338 DEMOUNTABLE PARTITION

1 SCOPE

The contractor shall install Hardy 338 demountable partitions in accordance with the approved drawings. Components shall be furnished by Charles G. Hardy Inc., and erection shall be in accordance with instructions as herein contained.

2 MATERIALS

- a. 2½" Steel "H" Studs, 25 gauge, galv.
- b. 1¾" I.D. Steel Stud Track 22 gauge galv.
- c. Face panels: ¾" Kerfed Gypsum Wallboard, 24" wide with Beveled Edges.
- d. Insulation: 1½" SAFB Thermafiber 24" x 48".
- e. Fasteners, base, battens, trim and components as pertinent to the system.

3 PERFORMANCE STANDARDS

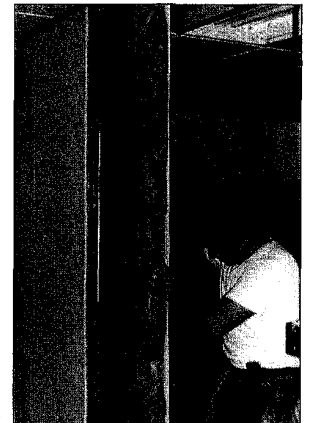
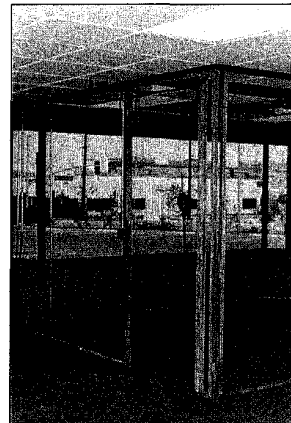
- a. Partition manufacturer shall make available on request sound isolation data based upon laboratory tests in accordance with ASTM E90. Such test data will document all sound ratings published in the manufacturer's technical literature.
- b. Partition manufacturer shall make available on request fire rating data based upon laboratory tests conducted in accordance with ASTM E119. Fire-rated (ceiling height only) partitions shall be erected in strict accordance with manufacturer's instructions based on test data.
- c. Erection of partition runs shall be made on finished floors and partition shall be straight and plumb.
- d. Utility provisions shall be made as indicated in the drawings by the partition contractor.
- e. The partition contractor shall perform the glazing as indicated in the drawings.

- f. Finish painting of plain gypsum wallboard panels shall be completed on the job site after erection, but before base and trim application. Vinyl-surfaced wallboard, requires no finish treatment.
- g. Cleaning of the job site after installation shall be the responsibility of the partition contractor.

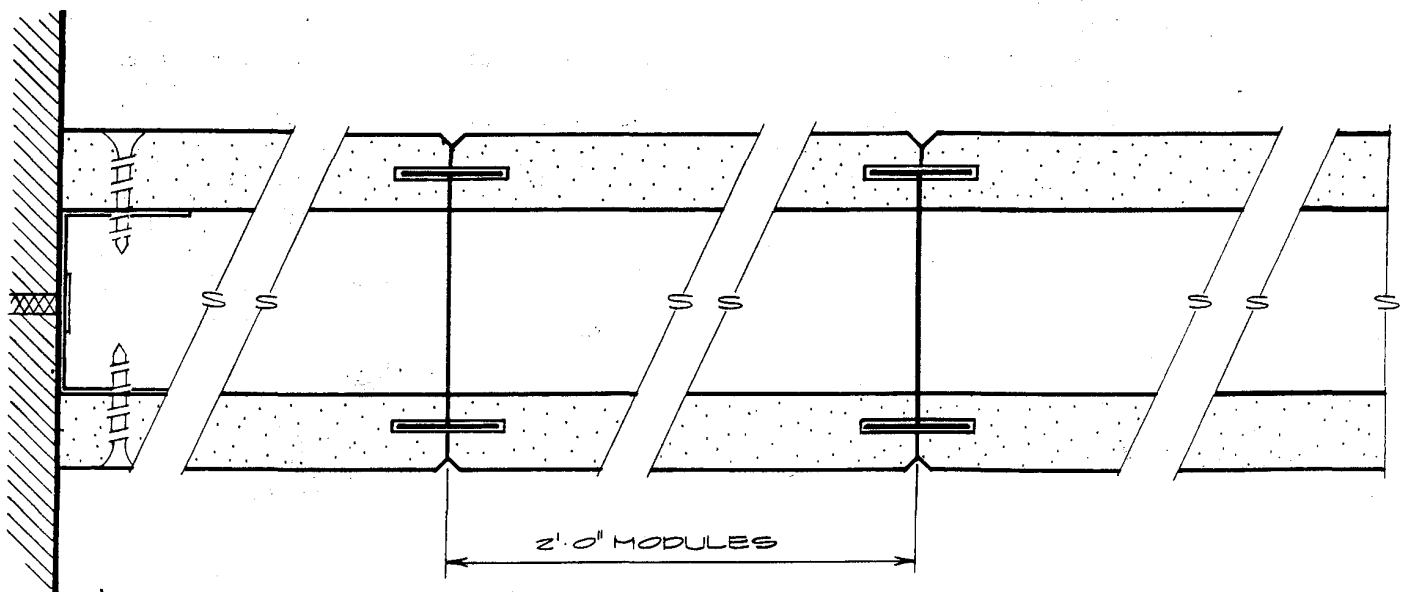
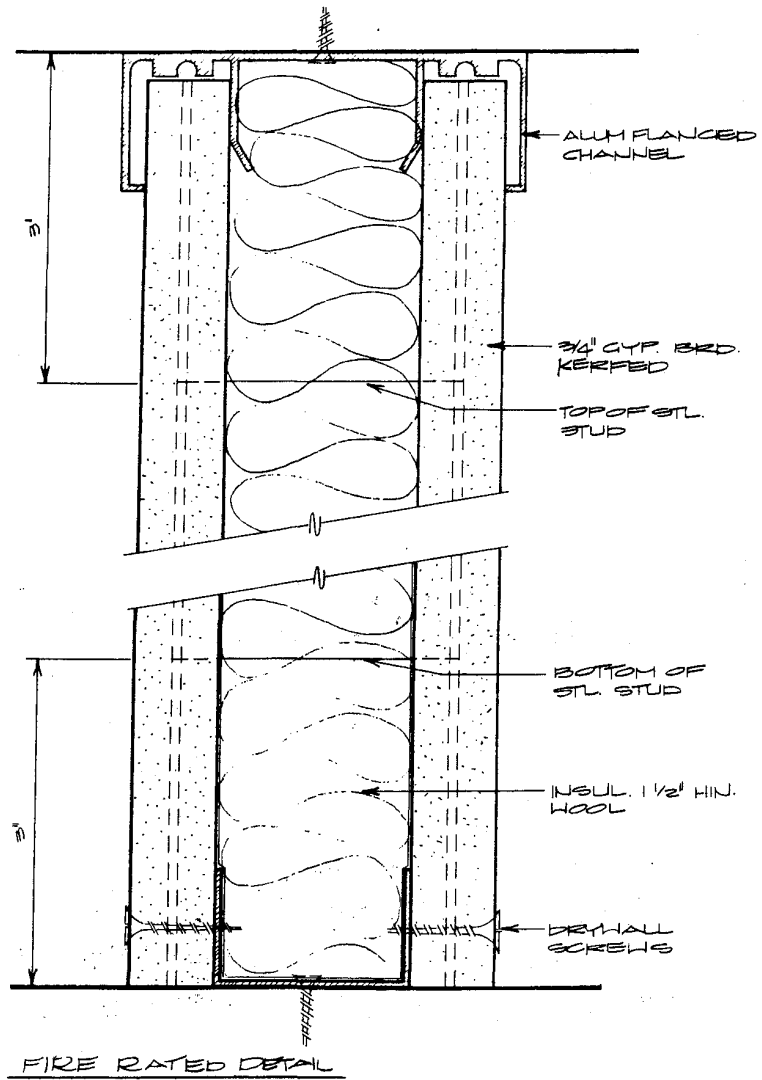
4 DOOR FRAMES

FRAMING REQUIREMENT:

- **Hollow Core Door:** Single 1¾" I.D. track strut for hinge jamb.
- **Solid Core Door:** Double 1¾" I.D. track strut back-to back for hinge jamb.
- **Closures:** Reinforcement for closure mounting screws shall be provided in the form of a wood block placed in the header track.



Fire and Sound Ratings:
STC-W/Insulation . . . 43db
STC-W/O Insulation . . . 36db
Partition Height Limitation 10'0"
One-Hour Code Approvals:
I.C.B.O. #4380
L.A. City R.R. #



HARDY-338